

**PLEASE CHECK WWW.MOLEX.COM FOR LATEST PART INFORMATION**

**Part Number:** [0358571819](#)  
**Status:** **Active**  
**Overview:**  
**Description:** 1.00mm (.039") Pitch FFC Connector, Vertical, Non-ZIF, 18 Circuits, 3.20mm (.126") Kinked PC Tail, Tube Packaging

**Agency Certification**

CSA LR19980  
 UL E29179

**General**

Product Family FFC/FPC Connectors  
 Series 35857  
 Overview ffc\_fpc\_throughhole  
 Product Name N/A

**Physical**

Circuits (Loaded) 18  
 Color - Resin Black  
 Contact Position N/A  
 Durability (mating cycles max) 10  
 Entry Angle Vertical  
 Flammability 94V-0  
 Mated Height (in) 0.205 In  
 Mated Height (mm) 5.20 mm  
 Material - Metal Phosphor Bronze  
 Material - Plating Mating Tin  
 Material - Plating Termination Tin  
 Material - Resin Nylon  
 Number of Rows 1  
 Orientation Vertical  
 PC Tail Length (in) 0.126 In  
 PC Tail Length (mm) 3.20 mm  
 PCB Locator No  
 PCB Retention Yes  
 Packaging Type Tube  
 Pitch - Mating Interface (in) 0.039 In  
 Pitch - Mating Interface (mm) 1.00 mm  
 Plating min: Mating (µin) 32.00  
 Plating min: Mating (µm) 0.800  
 Plating min: Termination (µin) 32.00  
 Plating min: Termination (µm) 0.80  
 Polarized to PCB No  
 Stackable No  
 Temperature Range - Operating -20°C to +80°C  
 Termination Interface: Style Through Hole  
 Wire/Cable Type FFC/FPC

**Electrical**

Current - Maximum per Contact 0.5A  
 Voltage - Maximum 50V

**Material Info**

**Reference - Drawing Numbers**

Packaging Specification PK-35857-001  
 Product Specification PS-35857-001

**EU RoHS**  
**ELV and RoHS**  
**Compliant**  
**REACH SVHC**  
**Not Reviewed**  
**Halogen-Free**  
**Status**  
**Not Reviewed**

**China RoHS**



**Need more information on product environmental compliance?**

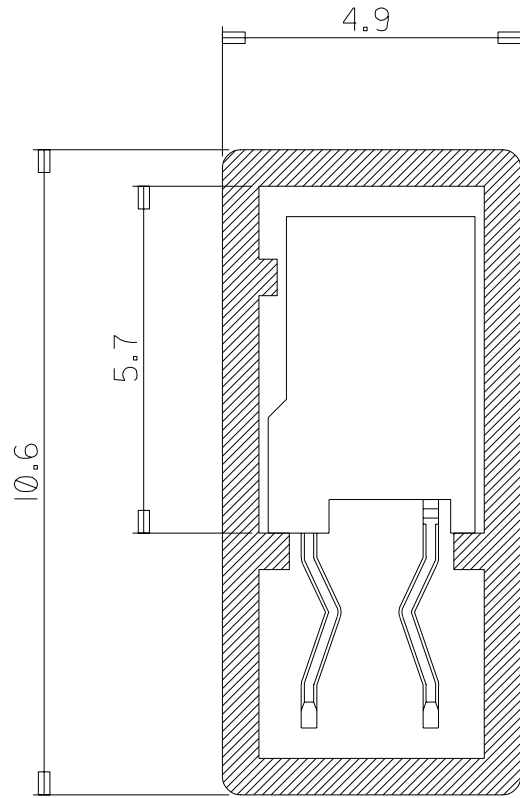
Email [productcompliance@molex.com](mailto:productcompliance@molex.com)  
 For a multiple part number RoHS Certificate of Compliance, [click here](#)

Please visit the [Contact Us](#) section for any non-product compliance questions.

**Search Parts in this Series**  
[35857Series](#)

This document was generated on 06/04/2010

**PLEASE CHECK [WWW.MOLEX.COM](http://WWW.MOLEX.COM) FOR LATEST PART INFORMATION**



NOTE

1. ENG NO.

HSG ASS'Y	PACKING	SHAPE	
		TAIL	KINK
35857-***11	35857-***19	3.2	0
35857-***21	35857-***29	3.2	X
35857-***31	35857-***39	2.8	0
35857-***41	35857-***49	2.8	X

2. MATERIAL : PVC

3. TUBE LENGTH : 550mm

NEW RELEASED  
 KOR2003-0277  
 HSSHIN 20030630  
 J.K.OH  
 C.W.LEE

8-1 X

H.S.SHIN 99.2.26

J.K.OH 99.2.26

C.W.LEE 99.2.26

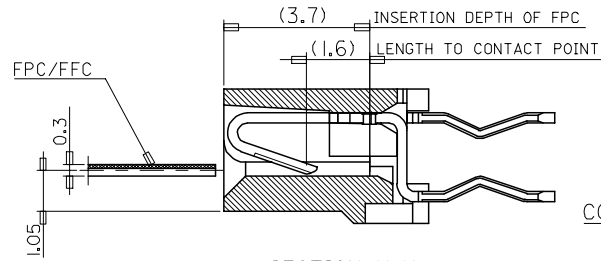
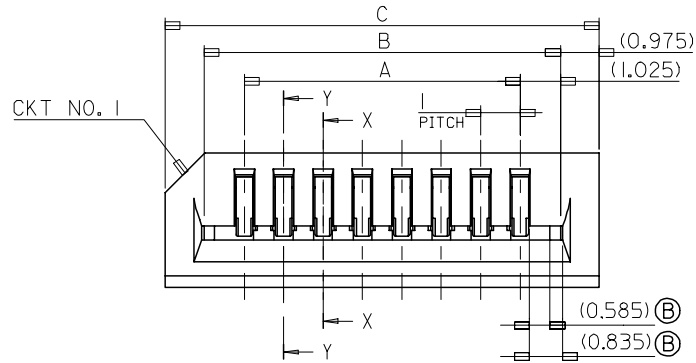
3

1

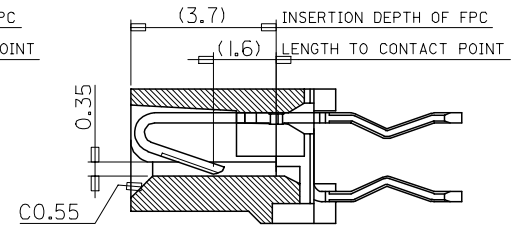
15	30	40	10
16	29	43	9
	28	47	8
17	27	52	7
	26	57	6
18	25	65	5
19	24	74	4
	23	85	3
Q'TY	CKT	Q'TY	CKT

X

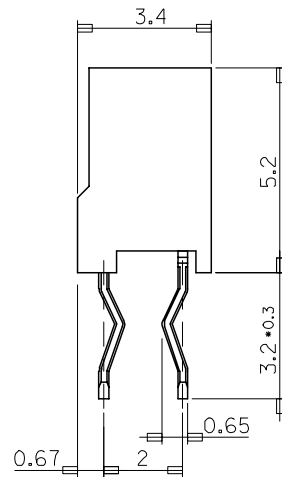
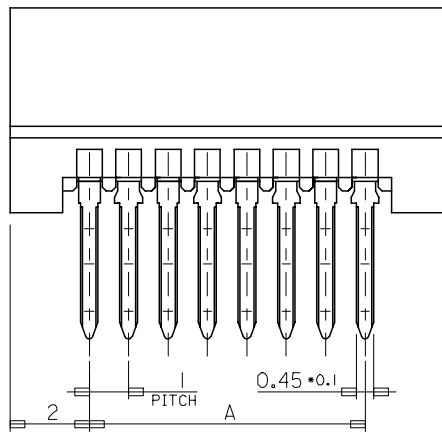
TUBE PACKING  
 FOR 35857 SERIES



SECTION X-X  
(ODD CKT)



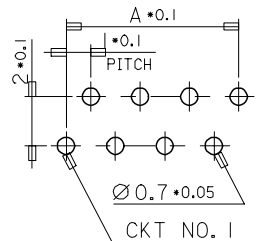
SECTION Y-Y  
(EVEN CKT)



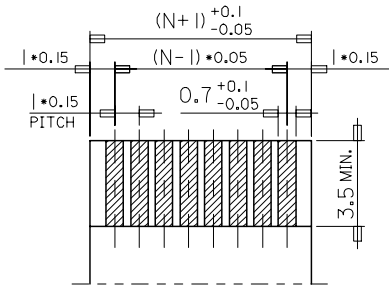
33	31.05	29	35857-3011	30
32	30.05	28	-2911	29
31	29.05	27	-2811	28
30	28.05	26	-2711	27
29	27.05	25	-2611	26
28	26.05	24	-2511	25
27	25.05	23	-2411	24
26	24.05	22	-2311	23
25	23.05	21	-2211	22
24	22.05	20	-2111	21
23	21.05	19	-2011	20
22	20.05	18	-1911	19
21	19.05	17	-1811	18
20	18.05	16	-1711	17
19	17.05	15	-1611	16
18	16.05	14	-1511	15
17	15.05	13	-1411	14
16	14.05	12	-1311	13
15	13.05	11	-1211	12
14	12.05	10	-1111	11
13	11.05	9	-1011	10
12	10.05	8	-0911	9
11	9.05	7	-0811	8
10	8.05	6	-0711	7
9	7.05	5	-0611	6
8	6.05	4	-0511	5
7	5.05	3	-0411	4
6	4.05	2	35857-0311	3
C	B	A	ENG NO.	CKT NO.

NOTES

- I. MATERIAL  
 HOUSING : NYLON66 (UL 94V-0)  
 (COLOR:BLACK)  
 TERMINAL : PHOSPHOR BRONZE  
 TIN-PLATED



P.C. BOARD LAYOUT  
(MOUNTING SIDE)  
(THK. : 1.6t)



APPLICABLE FPC  
(THK. : 0.3 \* 0.03)

REVISED EC NO: KOR2008-0049 DRWN:HJEONG 2007/09/12 CHKD:YOOKIM 2007/09/12 APPR:YUNSIKKIM 2007/09/18	QUALITY SYMBOLS ▽=0 △=0	GENERAL TOLERANCES (UNLESS SPECIFIED)	DIMENSION STYLE MM ONLY	SCALE 8:1	DESIGN UNITS METRIC	THIRD ANGLE PROJECTION																							
		<table border="1"> <tr><th>PLACES</th><th>MM</th><th>INCH</th></tr> <tr><td>4 PLACES</td><td>± ---</td><td>± ---</td></tr> <tr><td>3 PLACES</td><td>± ---</td><td>± ---</td></tr> <tr><td>2 PLACES</td><td>± ---</td><td>± ---</td></tr> <tr><td>1 PLACE</td><td>± 0.2</td><td>± ---</td></tr> </table>	PLACES	MM	INCH	4 PLACES	± ---	± ---	3 PLACES	± ---	± ---	2 PLACES	± ---	± ---	1 PLACE	± 0.2	± ---	<table border="1"> <tr><th>DATE</th><th>TITLE</th></tr> <tr><td>1999/02/26</td><td>1.0 PITCH FFC/FPC CONN. NON-ZIF(DIP) HSG ASS'Y</td></tr> <tr><td>1999/02/26</td><td></td></tr> <tr><td>1999/02/26</td><td></td></tr> <tr><td>1999/02/26</td><td></td></tr> </table>	DATE	TITLE	1999/02/26	1.0 PITCH FFC/FPC CONN. NON-ZIF(DIP) HSG ASS'Y	1999/02/26		1999/02/26		1999/02/26		MOLEX INCORPORATED
PLACES	MM	INCH																											
4 PLACES	± ---	± ---																											
3 PLACES	± ---	± ---																											
2 PLACES	± ---	± ---																											
1 PLACE	± 0.2	± ---																											
DATE	TITLE																												
1999/02/26	1.0 PITCH FFC/FPC CONN. NON-ZIF(DIP) HSG ASS'Y																												
1999/02/26																													
1999/02/26																													
1999/02/26																													
REV	DESCRIPTION	DRAFT WHERE APPLICABLE MUST REMAIN WITHIN DIMENSIONS	SEE TABLE	DOCUMENT NO. SD-35857-**11																									